

## Özellikler...

- 72 renk
- Pudralı, tozlu pastel boya kalemi
- Suda çözünürlük
- Harmanlama ve renkleri karıştırmak için idealdir
- Geleneksel toz pastellerden farkı, ahşap kaplamasıdır. Bu da kirlenmeyi önler ve temiz çalışma ortamı yaratır
- Tekli veya setler halinde sunulmaktadır:
  - 6'lı blister
  - 12'li teneke kutu (ten renkleri)
  - 12'li, 24'lü, 36'lı ve 72'li teneke kutu
  - 48'li ve 72'li ahşap kutu



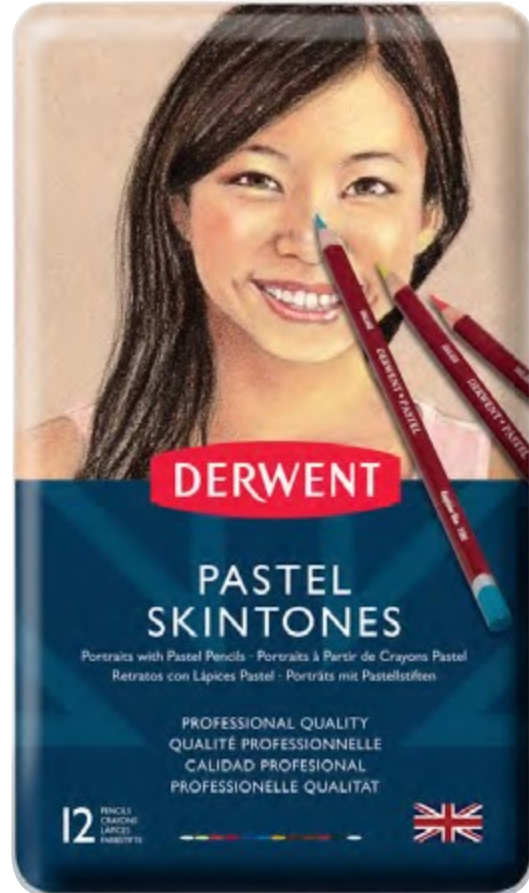
DW32991



DW39009



DW2300563



DW32992



DW0700307



DW32996



DW0700644



DW2300343





DRAWN TO PERFECTION

# PASTEL PENCILS

Pastel beauty, pencil control

														LF
	P10	Vanilla			●		●	●	●	●	●	●	V	3
	P20	Zinc Yellow					●	●	●	●	●	●	V	6
	P30	Process Yellow	●	●	●	●	●	●	●	●	●	●	V	7
	P40	Deep Cadmium						●	●	●	●	●	V	4
	P50	Saffron						●	●	●	●	●	V	8
	P60	Dandelion						●	●	●	●	●	V	5/6
	P70	Naples Yellow			●	●	●	●	●	●	●	●	V	8
	P80	Marigold						●	●	●	●	●	V	8
	P90	Burnt Orange						●	●	●	●	●	V	6
	P100	Spectrum Orange	●	●	●	●	●	●	●	●	●	●	V	6
	P110	Tangerine						●	●	●	●	●	V	7
	P120	Tomato						●	●	●	●	●	V	7
	P130	Cadmium Red	●	●	●	●	●	●	●	●	●	●	V	5
	P140	Raspberry					●	●	●	●	●	●	V	5
	P150	Flesh					●	●	●	●	●	●	V	3
	P160	Crimson			●	●	●	●	●	●	●	●	V	5
	P170	Maroon						●	●	●	●	●	V	6
	P180	Pale Pink						●	●	●	●	●	V	3
	P190	Coral						●	●	●	●	●	V	3
	P200	Magenta			●	●	●	●	●	●	●	●	V	2
	P210	Dark Fuchsia						●	●	●	●	●	V	4
	P220	Burgundy						●	●	●	●	●	V	4
	P230	Soft Violet						●	●	●	●	●	V	4
	P240	Violet Oxide						●	●	●	●	●	V	6
	P250	Lavender						●	●	●	●	●	V	3
	P260	Violet	●	●	●	●	●	●	●	●	●	●	V	4
	P270	Red Violet						●	●	●	●	●	V	3
	P280	Dioxazine Purple			●	●	●	●	●	●	●	●	V	7
	P290	Ultramarine	●	●	●	●	●	●	●	●	●	●	V	3
	P300	Pale Ultramarine						●	●	●	●	●	V	3
	P310	Powder Blue						●	●	●	●	●	V	7
	P320	Cornflower Blue						●	●	●	●	●	V	7
	P330	Cerulean Blue						●	●	●	●	●	V	8
	P340	Cyan	●	●	●	●	●	●	●	●	●	●	V	8
	P350	Prussian Blue	●	●	●	●	●	●	●	●	●	●	V	8
	P360	Indigo						●	●	●	●	●	V	8

															LF
	P370	Pale Spectrum blue								●	●	●	●	V	5
	P380	Kingfisher Blue							●	●	●	●	V	8	
	P390	Cobalt Blue							●	●	●	●	V	8	
	P400	Cobalt Turquoise							●	●	●	●	V	8	
	P410	Forest Green	●	●	●	●	●	●	●	●	●	●	V	8	
	P420	Shamrock							●	●	●	●	V	8	
	P430	Pea Green			●	●	●	●	●	●	●	●	V	5	
	P440	Mid Green							●	●	●	●	V	8	
	P450	Green Oxide							●	●	●	●	V	8	
	P460	Emerald Green							●	●	●	●	V	8	
	P470	Fresh Green							●	●	●	●	V	7	
	P480	May Green							●	●	●	●	V	4	
	P490	Pale Olive							●	●	●	●	V	8	
	P500	Ionian Green							●	●	●	●	V	8	
	P510	Olive Green							●	●	●	●	V	8	
	P520	Dark Olive							●	●	●	●	V	8	
	P530	Sepia	●	●	●	●	●	●	●	●	●	●	V	8	
	P540	Burnt Umber							●	●	●	●	V	8	
	P550	Brown Earth							●	●	●	●	V	8	
	P560	Raw Umber							●	●	●	●	V	8	
	P570	Tan							●	●	●	●	V	8	
	P580	Yellow Ochre	●	●	●	●	●	●	●	●	●	●	V	8	
	P590	Chocolate			●	●	●	●	●	●	●	●	V	8	
	P600	Burnt Ochre							●	●	●	●	V	8	
	P610	Burnt Carmine							●	●	●	●	V	8	
	P620	Dark Sanguine							●	●	●	●	V	4	
	P630	Venetian Red							●	●	●	●	V	8	
	P640	Terracotta			●	●	●	●	●	●	●	●	V	8	
	P650	French Grey Dark							●	●	●	●	V	8	
	P660	Seal							●	●	●	●	V	8	
	P670	French Grey Light							●	●	●	●	V	5/6	
	P680	Aluminium Grey							●	●	●	●	V	6	
	P690	Blue Grey							●	●	●	●	V	5/6	
	P700	Graphite Grey							●	●	●	●	V	8	
	P710	Carbon Black	●	●	●	●	●	●	●	●	●	●	V	8	
	P720	Titanium White	●	●	●	●	●	●	●	●	●	●	V	8	

● 6'lı Blister ● 12'li Teneke Kutu ● 12'li Skintones ● 24'lü Teneke Kutu ● 36'lı Teneke Kutu ● 48'li Ahşap Kutu  
● 72'li Ahşap Kutu ● 72'li Teneke Kutu

Işık Hassıgı (LF) = 3,4 – VASAT-ORTA | 5,6 – İYİ-ÇOK İYİ | 7,8 – MÜKEMMEL – V- VEJETERYAN DOSTU